

PALMETTO COLLECTION

IXORA

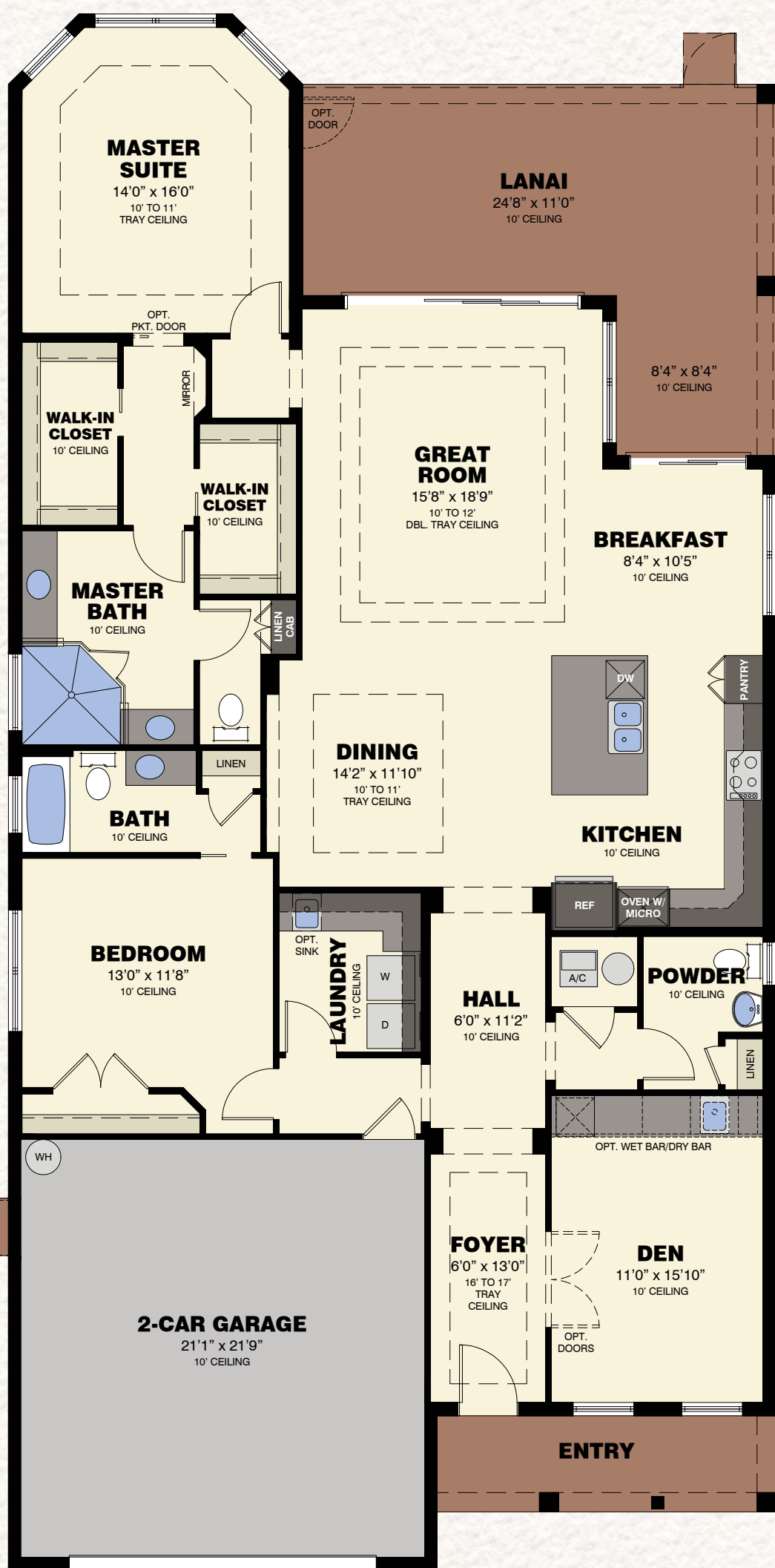
2 Bedrooms / 2.5 Baths / Den / Covered Lanai / 2-Car Garage



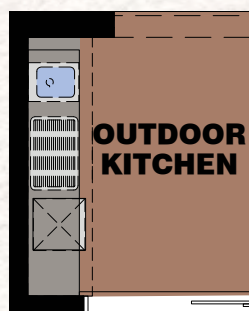
Elevation A



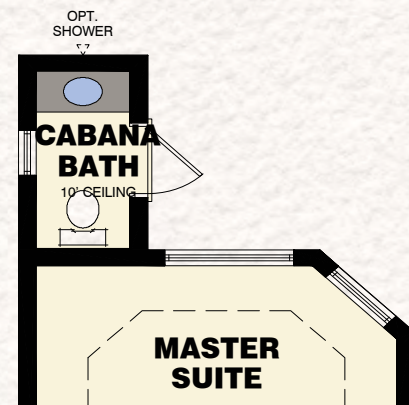
Elevation B



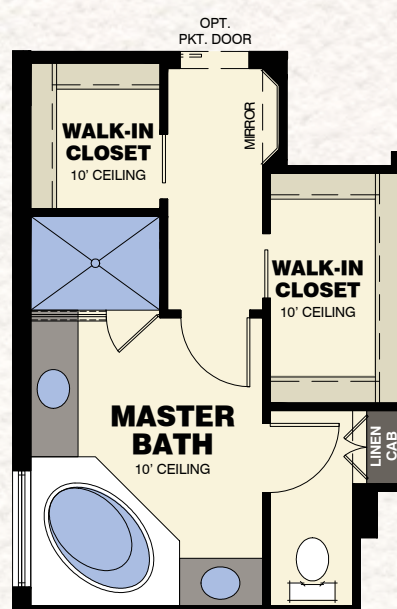
FLOOR PLAN



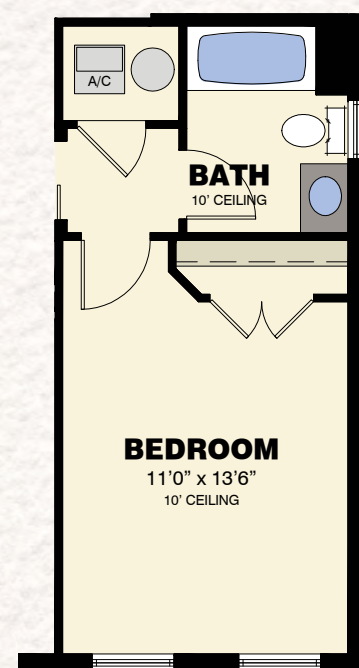
AVAILABLE OUTDOOR KITCHEN VARIATION



AVAILABLE CABANA BATH VARIATION



AVAILABLE MASTER BATH VARIATION



AVAILABLE BEDROOM VARIATION

Total Living Area	2,163 S.F.
2-Car Garage	491 S.F.
Entry	88 S.F.
Lanai	341 S.F.
Total	3,083 S.F.

The Isles
OF COLLIER PRESERVE